

Nokia Customer Care
RH-53/54

6-Disassembly and Assembly Instructions

[This page left intentionally blank]

Table of Contents

	Page No
RH-53/54 Disassembly	5
Domesheet Exchange instructions	12
RH-53/54 Reassembly	14

[This page left intentionally blank]

RH-53/54 Disassembly

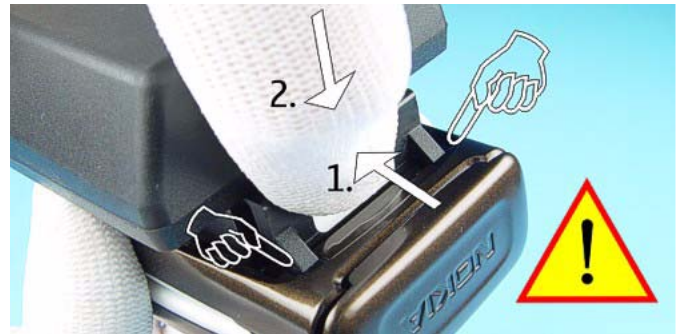
Disassembly instructions



It is very important to follow this insertion and removal procedure, otherwise the contact pins of Flash Adapter will be damaged.



1.) Insert the Flash Adapter SF-33 by starting at the Battery Connector side.



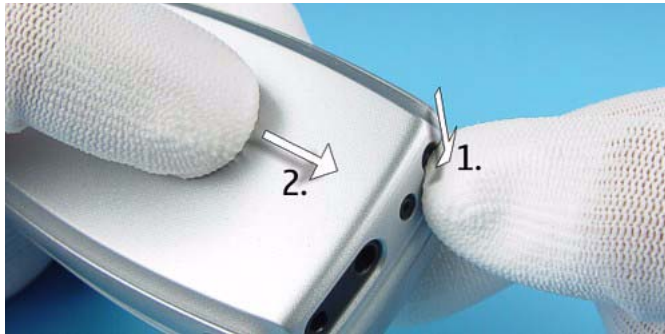
2.) First, press the locking of the Flash Adapter and then push it into the bottom side of the phone, do not use too much force.



3.) When removing the Flash Adapter, press the locking as shown in the picture.



4.) Take away the unit now.



1.) Push down the Release Button before pulling the Battery Cover.



2.) Open the unit and protect the Window with a plastic film.



3.) The Backplate is attached to the Hinge Spring with two adhesive tapes. **To avoid the snaps from breaking it is important that the Backplate is at first lifted on the right side referring to the "NOKIA" logo.**



4.) Now, remove the Backplate adhesive. If necessary clean the Backplate and the Hinge Spring before attaching using new Backplate Adhesives.



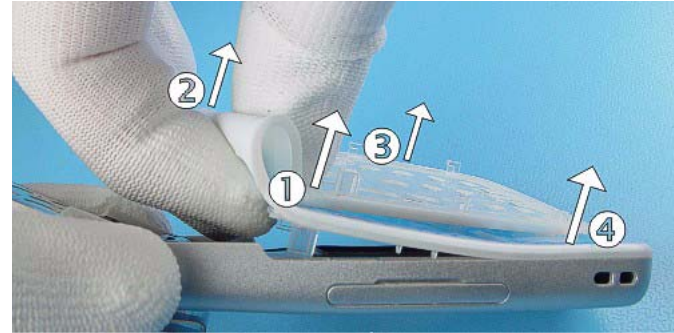
5.) A-Face Assy is attached with snaps to the B-Cover Lower Block. Release the two snaps first.



6.) Shift the A-Face Assy from the B-Cover as shown in the picture.



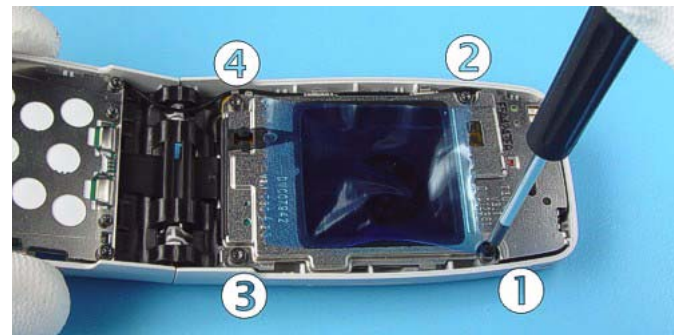
7.) Fold the A-Face Assy as shown in the picture.



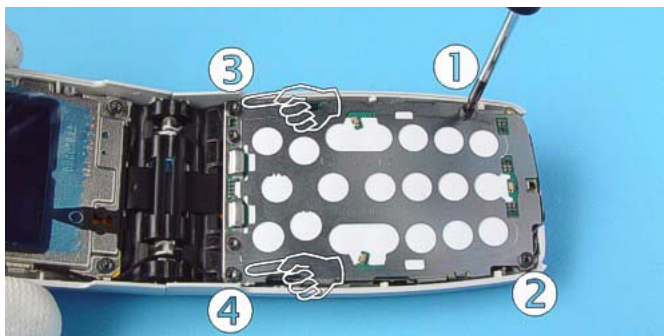
8.) Remove the A-Face Assy from the B-Cover Upper Block carefully.



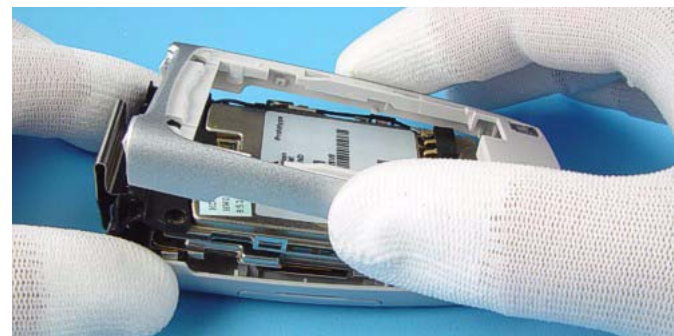
9.) Protect the inner side of the Window with a plastic film.



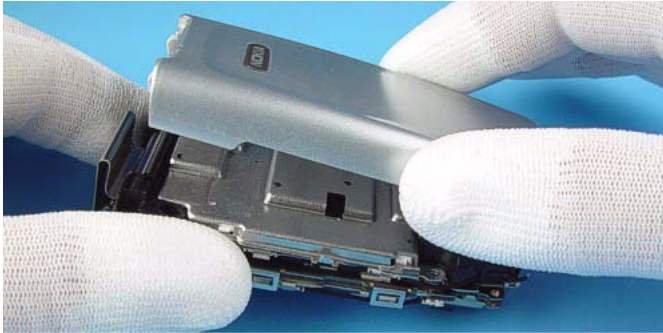
10.) Unscrew the four Torx Plus[®] size 6 screws of Upper Block. For assembly, the reverse order and a Torx Plus[®] driver with a torque of 27Ncm has to be used.



11.) Unscrew the four Torx Plus[®] size 6 screws of Lower Block. For assembly, the reverse order and a Torx Plus[®] driver with a torque of 27Ncm has to be used.



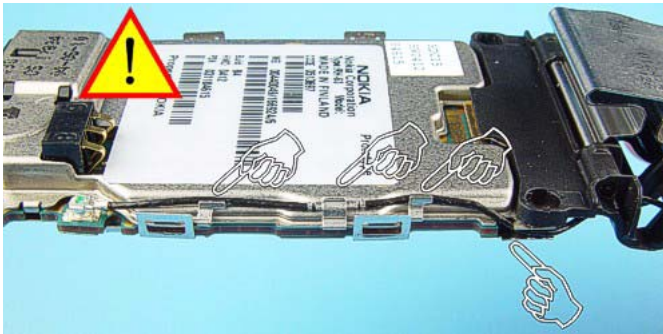
12.) Now, the B-Cover Lower Block...



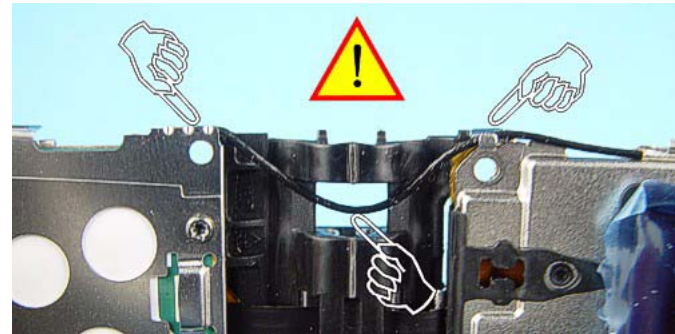
13.) ...and the B-Cover Upper Block can be removed.

Consider if the malfunction caused by Upper or Lower Block. Only open the Coax Connector and remove the Coax Cable on the defective Block of the unit.

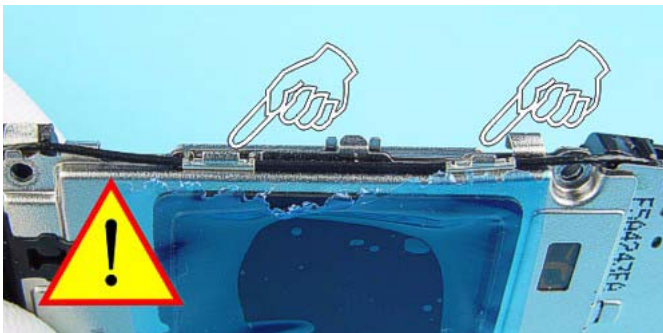
(For e.g. LCD / Vibra / IHF Speaker fault -> start disassemble upper part, Microphone / Keymat / Charger fault -> start disassemble lower part)



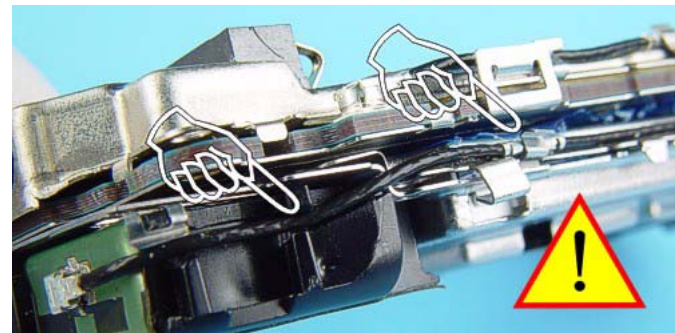
14.) Placement of the Coax Cable in the Lower Block.



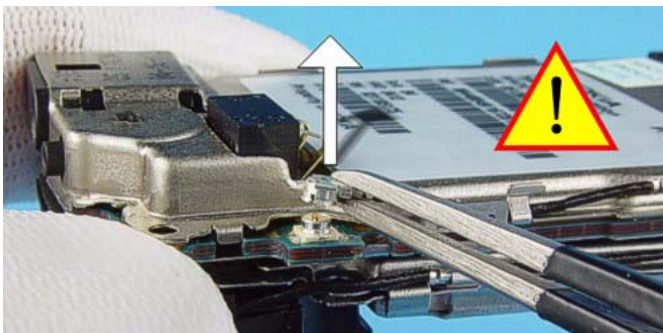
15.) Placement of the Coax Cable in the Hinge.



16.) Placement of the Coax Cable in the Upper Block.



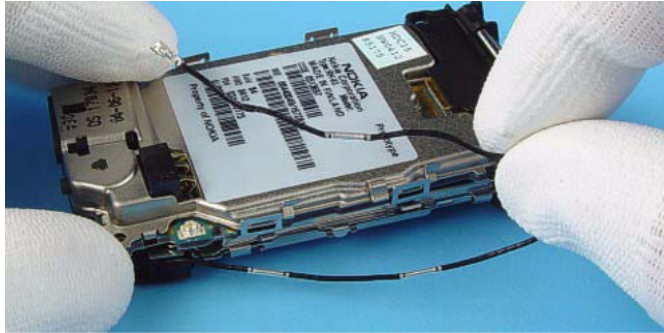
17.) Placement of the Coax Cable in the IHF Antenna Chamber.



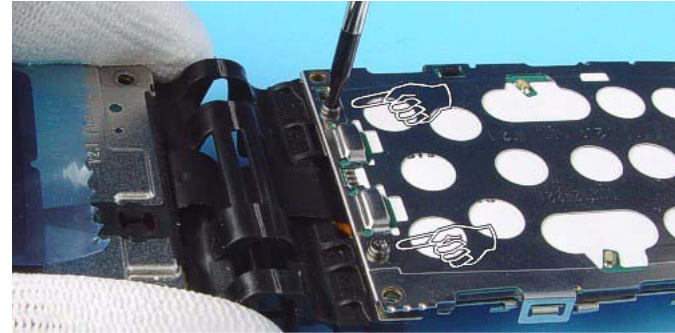
18.) Open the Coax Connector of the Engine Module carefully by using tweezers.



19.) Note the exactly position when laying the Coax Cable during assembly.



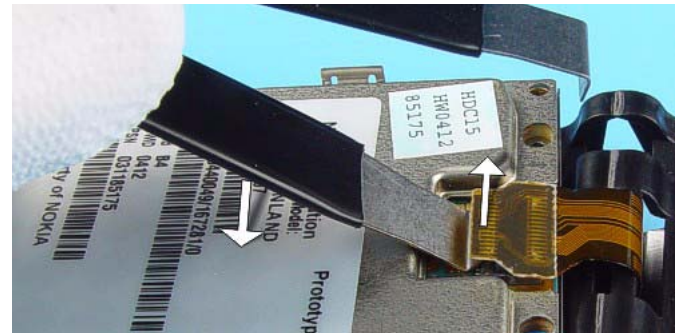
20.) Remove the Cable carefully. **When assembling always starts with the Antenna Connector, "stretch" the cable towards hinge area carefully, then the same procedure when assembling at Engine Module side.**



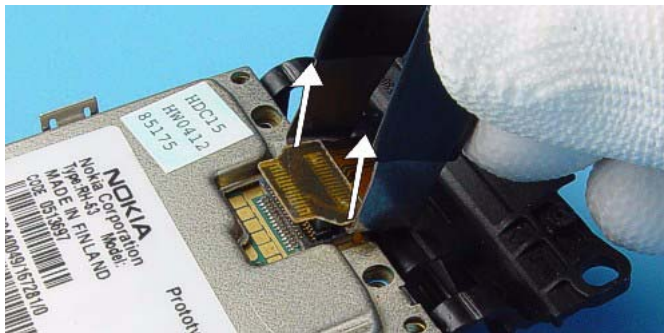
21.) Unscrew the two Torx Plus® size 5 screws from Lower Block. **For assembly, a Torx Plus® driver with a torque of 6Ncm has to be used.**



22.) Put the Lower Block on the Upper Block as shown in the Picture.



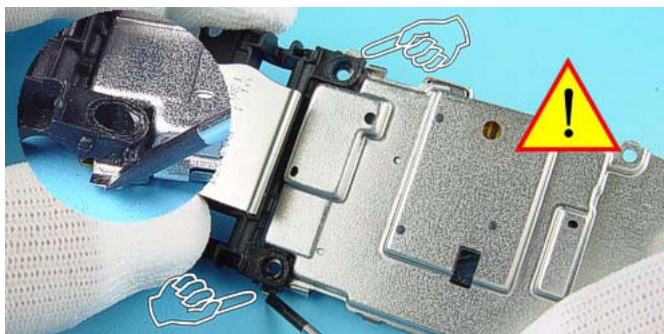
23.) Lift the shown side of the Flex Connector carefully by using the Flex Opening Tool as a lever.



24.) Now, open the Connector carefully.



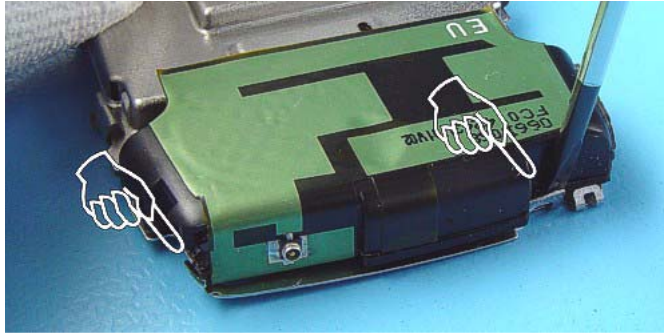
25.) Separate the Modules.



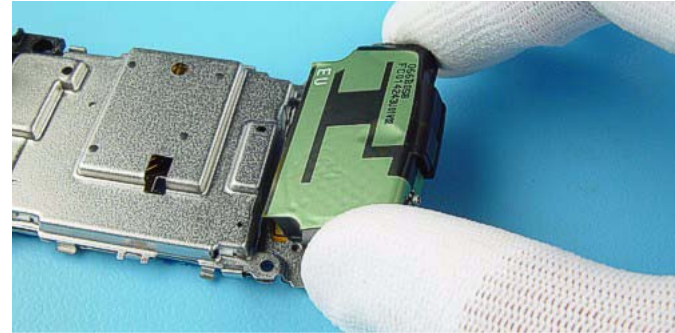
26.) Open the hooks before removing the Plastic Hinge.



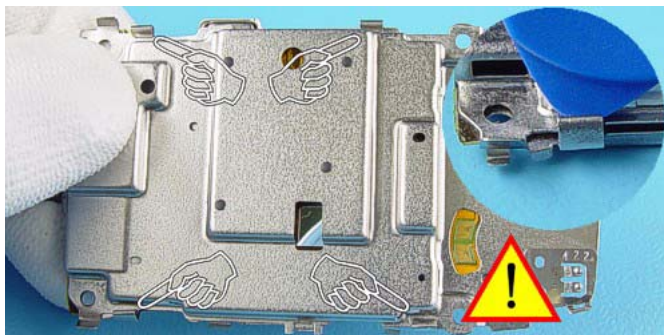
27.) Take care not to damage the Flex Connector when removing the Plastic Hinge.



28.) Unlock the snaps before removing the IHF Antenna Chamber.



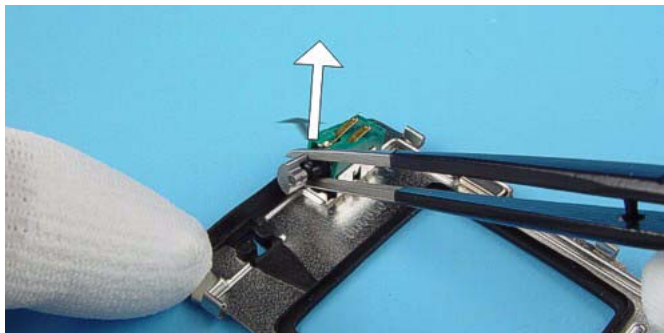
29.) Remove the Antenna Chamber.



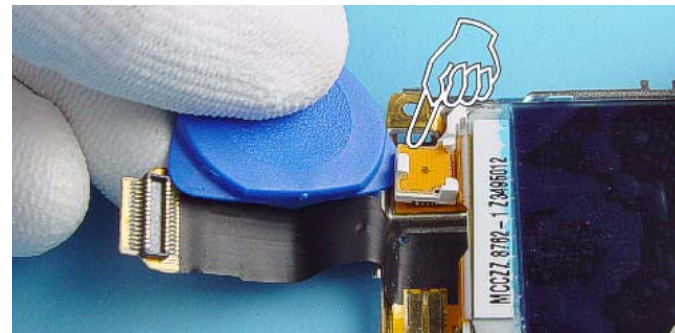
30.) Release the four hooks carefully by using the SRT-6.



31.) Separate the C2-Cover from LCD CAN Assy.



32.) Use tweezers when removing the Vibra Motor.



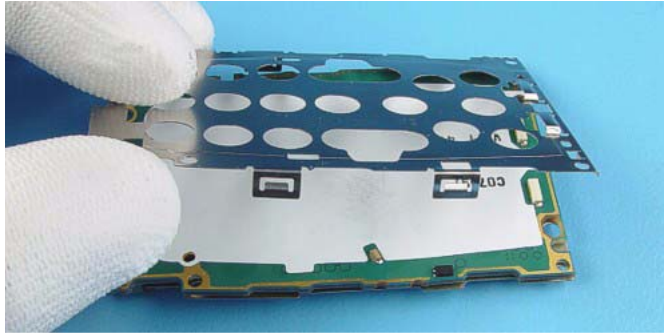
33.) Open the LCD Connector by using the SRT-6 carefully.



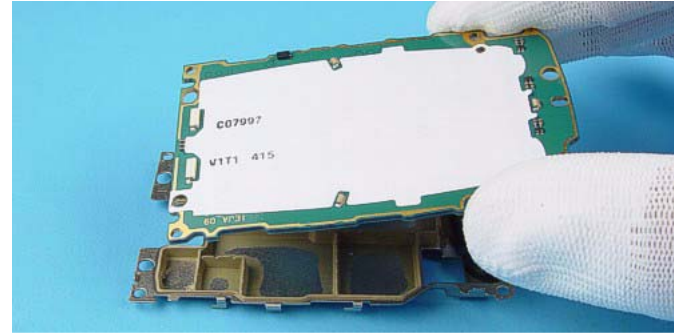
34.) Place the SRT-6 between LCD and the LCD Can as shown in the picture and lever out the LCD carefully.



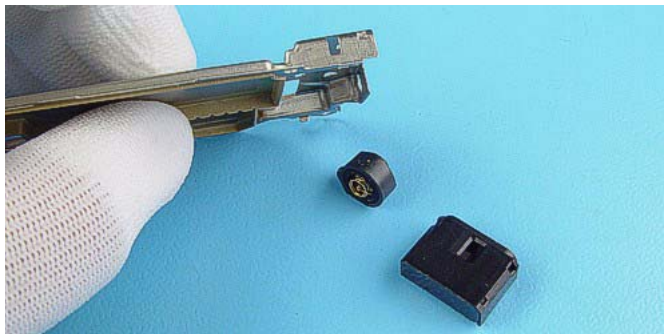
35.) Release the four springs of Key Dome Shield.



36.) Now, the Key Dome Shield can be removed.

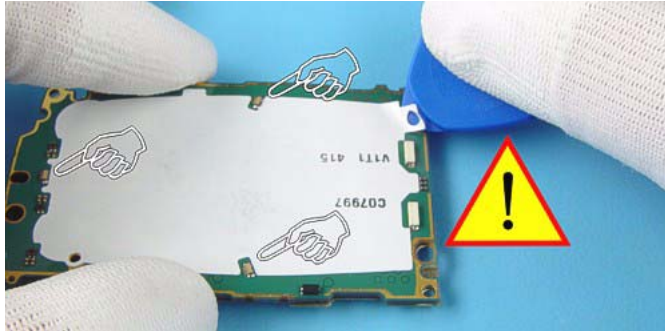


37.) The Engine Module can be removed easily.

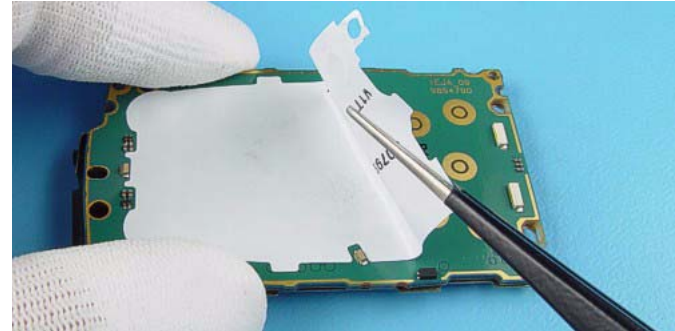


38.) System Connector and Microphone drop out when turning the Shielding Can.

Domesheet Exchange instructions



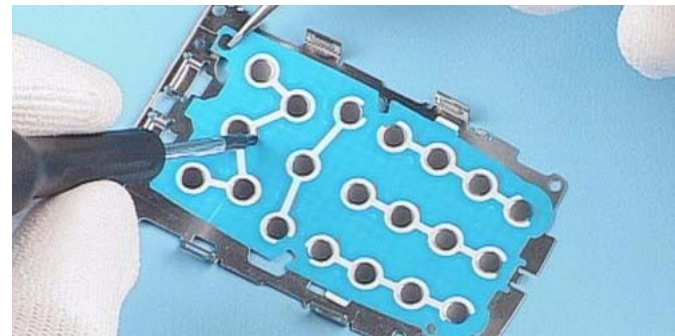
1.) Take care not to damage the LED's when exchanging the Domesheet. Start with SRT-6 as shown in the picture.



2.) Tweezers can be used to remove the defective Domesheet.



3.) Take the new Domesheet with tweezers.



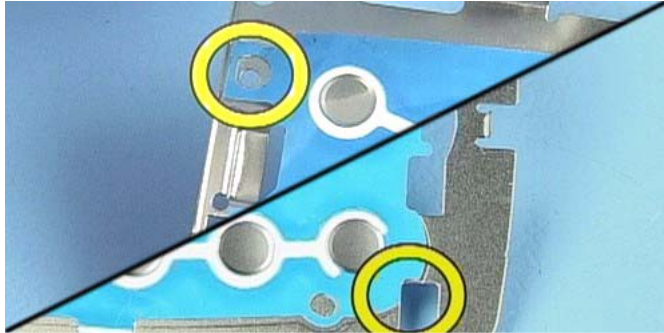
4.) Place the Domesheet in the Key Dome Shield.



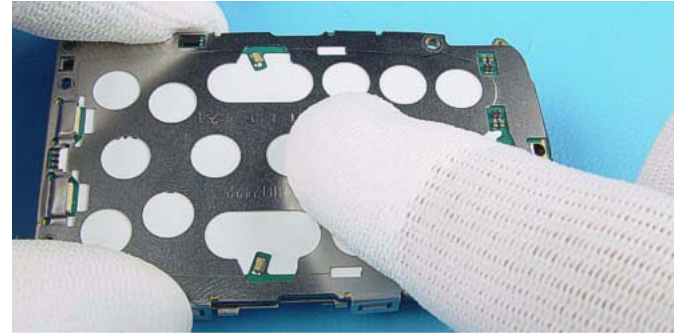
5.) Place the Dome Sheet straps into the slot of the Key Dome Shield.



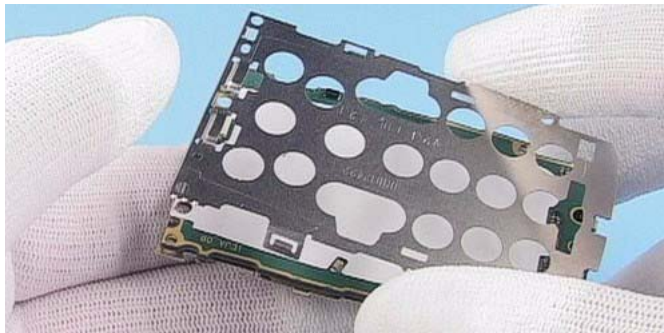
6.) Same procedure on the opposite side.



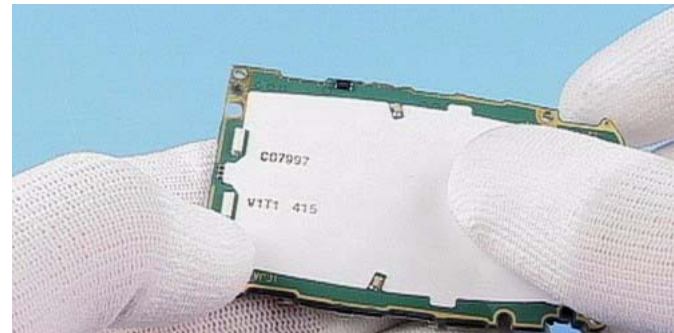
7.) Make sure that the edges and the screw holes of Domesheet and the Key Dome Shield are congruent to each other.



8.) Place the Key Dome Shield with the Domesheet on the Engine Module exactly and press-on the Domesheet carefully. Check if the Domesheet is correctly stuck to the Engine Module.



7.) Remove the Key Dome Shield again.



8.) Press on the Domesheet carefully. Ensure also, that there are no open edges or air gap.

RH-53/54 Reassembly

The reassembly takes place in reversed order.